



Installation Guide for enteo's cumulative patch in NetInstall 5.8x

Document Information

Date of creation: February, 1st 2005
Date of latest editing: February, 22th 2008

© Copyright 2006 by enteo Software. All Rights reserved. All brand and product names mentioned in this document are trademarks of their respective legal owners and are hereby recognized as such.

This document may not be reproduced either as a whole or partially in any form or by any means, whether electronically or mechanically, including, but not limited to the way of: photocopying, recording, or information recording and retrieval systems without first obtaining express written permission from enteo Software. The statements and data contained in these documents may be changed without prior notice. The use of the information and index-listings given here is done exclusively at your own responsibility. enteo Software provides you this information without assurances regarding its accuracy, completeness and/or functionality. With the index-listings, simply the method of function for the given example should be shown.

Written and developed by enteo Software GmbH, Gottlieb-Manz-Straße 10, 70794 Filderstadt, Germany.

Table of Contents

1	Introduction	3
2	enteo NetInstall 5.8x patches.....	3
2.1	Cumulative enteo 5.8 patch	3
2.2	Cumulative enteo 5.85 patch	3
3	Patch Installation	3
4	Updating the Remaining NetInstall Servers	4
4.1	Updating the Program Files	4
4.2	Updating „out-of-date“ Management Applications	7

1 Introduction

This document describes the installation process for enteo product patches; the patches can be downloaded from the enteo website. If you have questions or need support with patch installation, please refer to the enteo Support Center.

2 enteo NetInstall 5.8x patches

2.1 Cumulative enteo 5.8 patch

The following products can be updated with the cumulative patch for NetInstall 5.8:

- NetInstall (incl. A&D and Smart Client)
- Inventory 3.2
- Inventory 3.1
- Security Patch Deployment SP0
- Security Patch Deployment SP1
- Operating System Deployment
- Reflect
- Citrix
- PC Relocator

The patch for NetInstall 5.8 is a self-extracting EXE file with integrated setup and is available for download from the enteo website.

2.2 Cumulative enteo 5.85 patch

The following products can be updated with the cumulative patch for NetInstall 5.85:

- NetInstall (incl. A&D and Smart Client)
- Inventory 3.2
- Security Patch Deployment SP1
- Operating System Deployment
- enteo Remote
- Citrix

The patch for NetInstall 5.85 is a self-extracting EXE file with integrated setup and is available for download from the enteo website.

3 Patch Installation

1. Save the following directories and/or files from your NetInstall share
 - AddOns directory
 - SSI directory
 - The files in the root directory
2. Run the EXE file. The patch automatically updates your NetInstall share.
3. Update the remaining NetInstall servers by running the NetInstall Version Check (NiVerCheck). Please check Chapter 4 “Updating the remaining NetInstall servers “

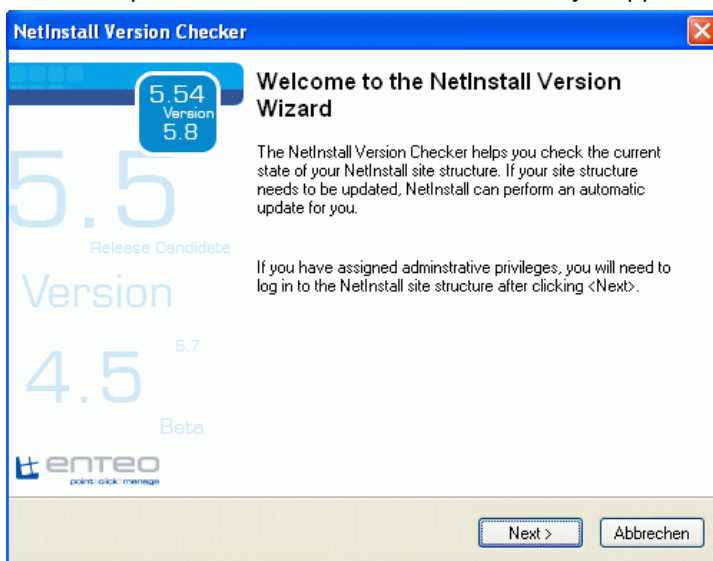
4 Updating the Remaining NetInstall Servers

Using NetInstall 5.8x you need to make sure that the updated files are distributed over the other NetInstall servers; run the program `NiVerChk.exe` to assist you.

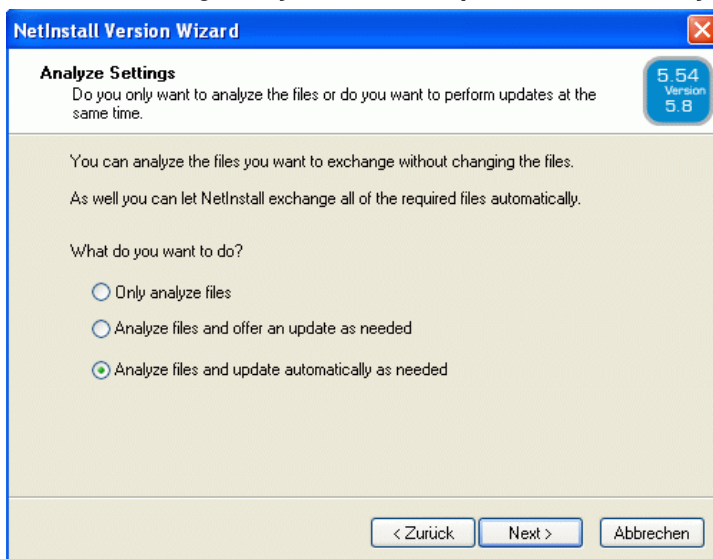
4.1 Updating the Program Files

1. Run the `NiVerChk.exe` from the NetInstall share on the ORG Master Server. Start the EXE via UNC-patch.

`NiVerChk.exe` will update the NetInstall program files on all NetInstall servers automatically. Also, all replication services can be automatically stopped, configured or restarted.

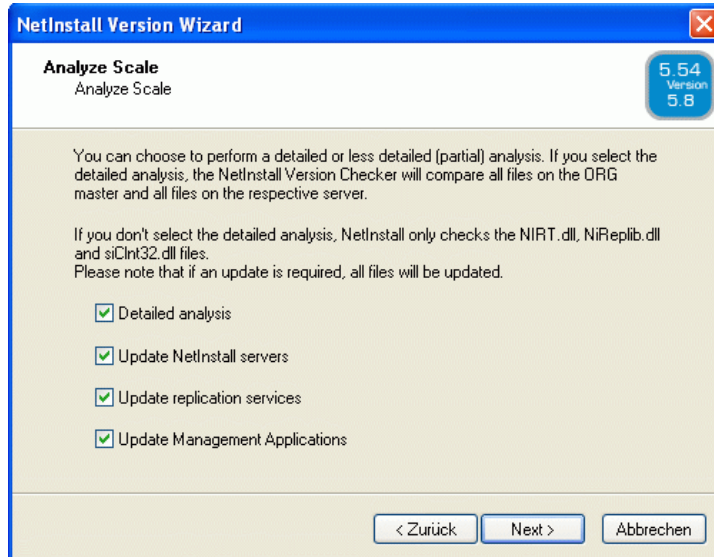


2. If required, log on with your NetInstall Admin account.
3. Select the setting **Analyze files and update automatically as needed**.

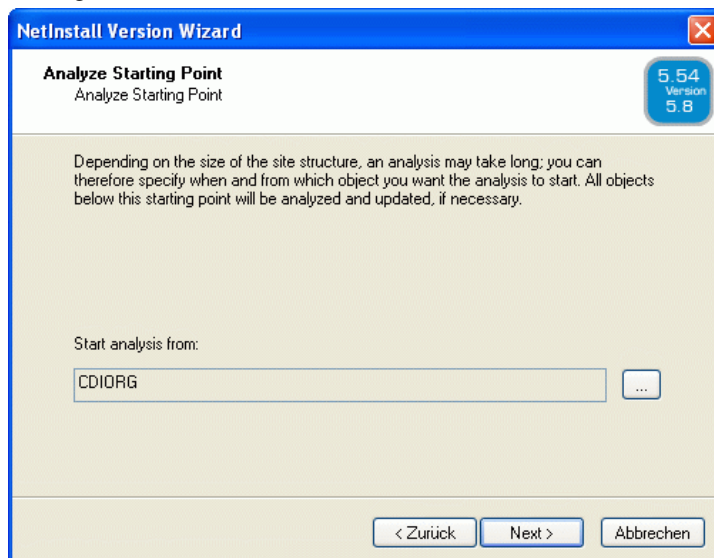


4. Activate all options of the **Analyze Scale**.

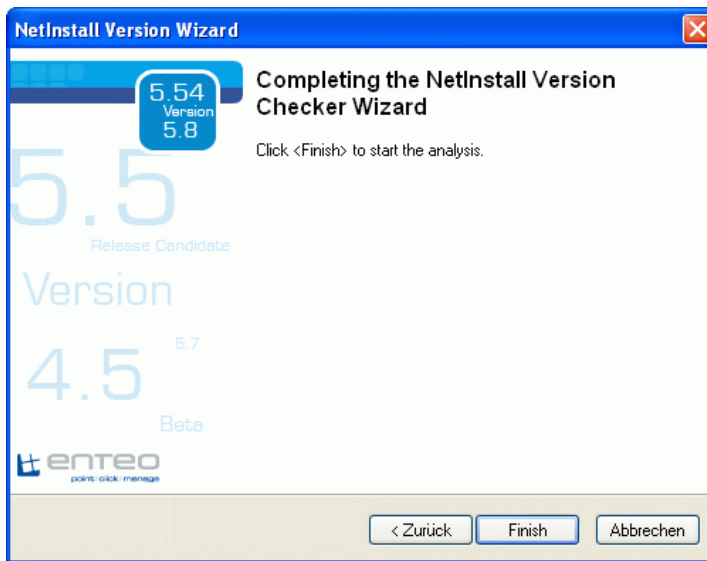
(Note: If you select the **Detailed Analysis** option, NetInstall will only check whether files need to be updated. The actual update always includes all files.)



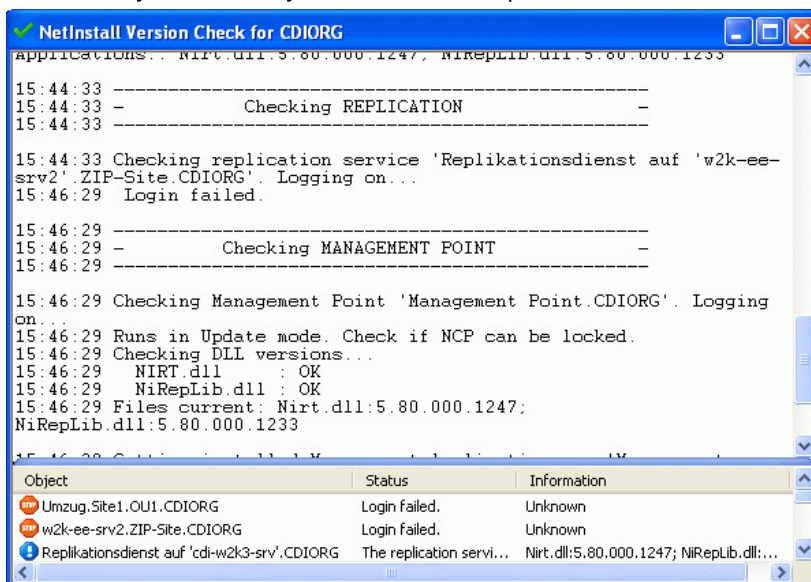
5. Keep the default **Analyze Starting Point** for the analysis; the ORG is always the default setting.



- Click **Finish**



- In the Analysis window you can check the process and the results of the analysis.



The old NetInstall program files will be updated without further notice.

- When the update is finished you can stop NIVerChk.

4.2 Updating „out-of-date“ Management Applications

In the NetInstall Manager you can check the status of the installed **Management Applications** by opening the **Applications** tab in the Management Point Properties.

If the status of the **Management Application** is displayed as **out-of-date** on this tab after having updated the enteo environment with NiVerCheck, please update this **Management Application** manually.

To update the **out-of-date Management Applications** please open the NetInstall Manager via the UNC path directly on the respective Management Point Server (e.g. \\<ORG-Master-Server\<NI-Share>\NiMgr32.exe), select the respective **Management Application** from the **Applications** tab and then click **Update Application**.

(Note: If problems arise, please click the **Install** button or restart the server completely).

